

BIRCH STREET ELEMENTARY





SEVERE WEATHER, FIRE & EVACUATION ROUTE

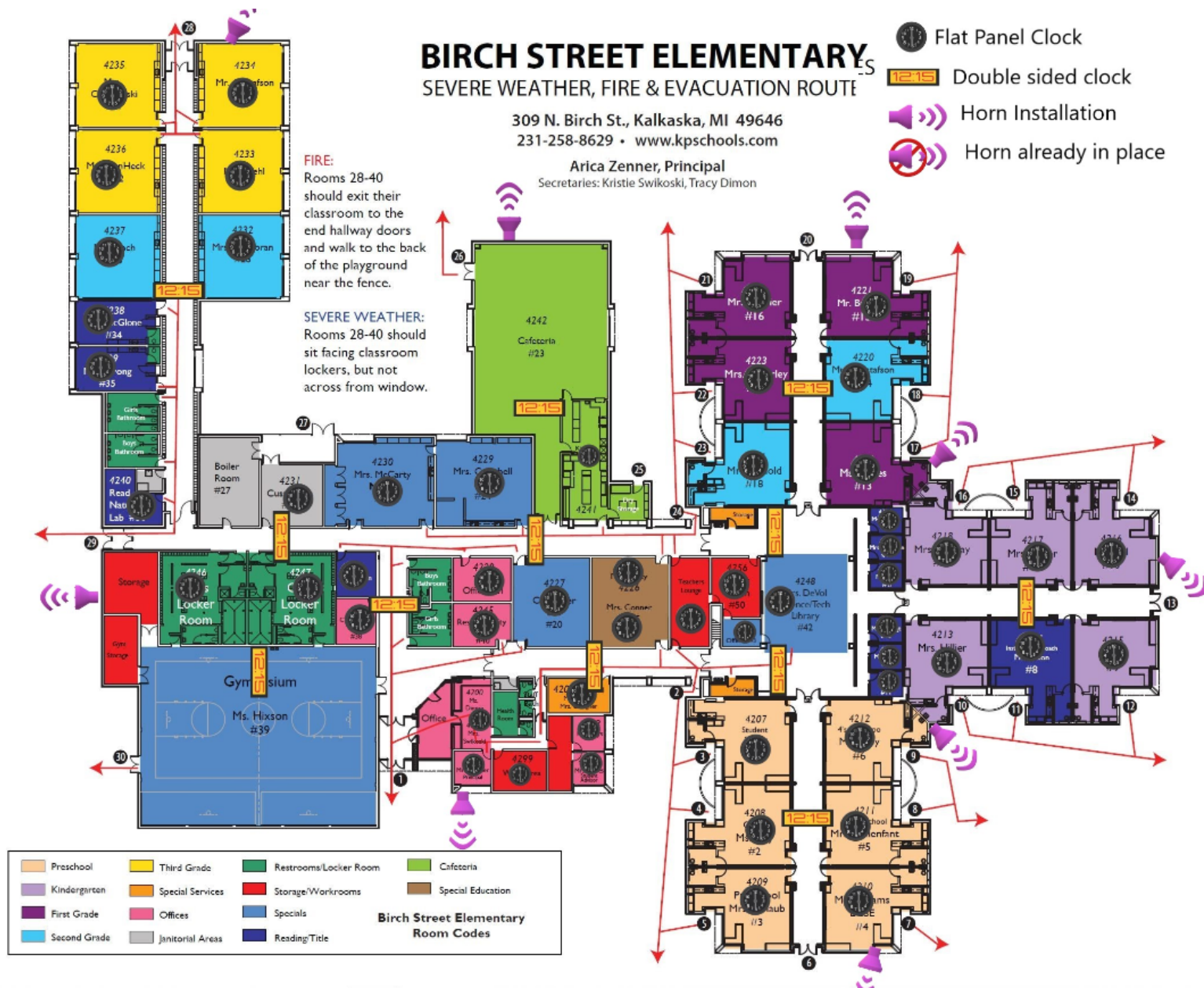
309 N. Birch St., Kalkaska, MI 49646
231-258-8629 • www.kpschools.com

Arica Zenner, Principal
Secretaries: Kristie Swkoski, Tracy Dimon

FIRE:
Rooms 28-40 should exit their classroom to the end hallway doors and walk to the back of the playground near the fence.

SEVERE WEATHER:
Rooms 28-40 should sit facing classroom lockers, but not across from window.

-  Flat Panel Clock
-  Double sided clock
-  Horn Installation
-  Horn already in place







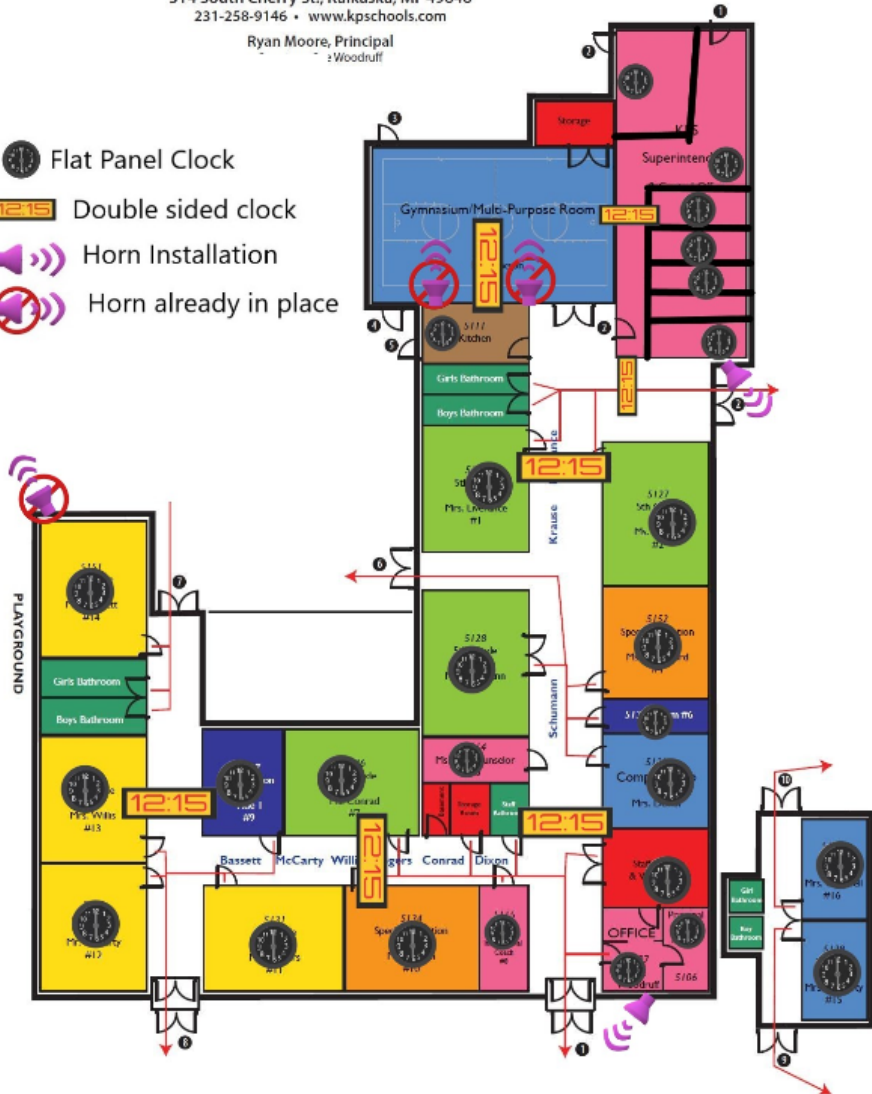
CHERRY STREET INTERMEDIATE

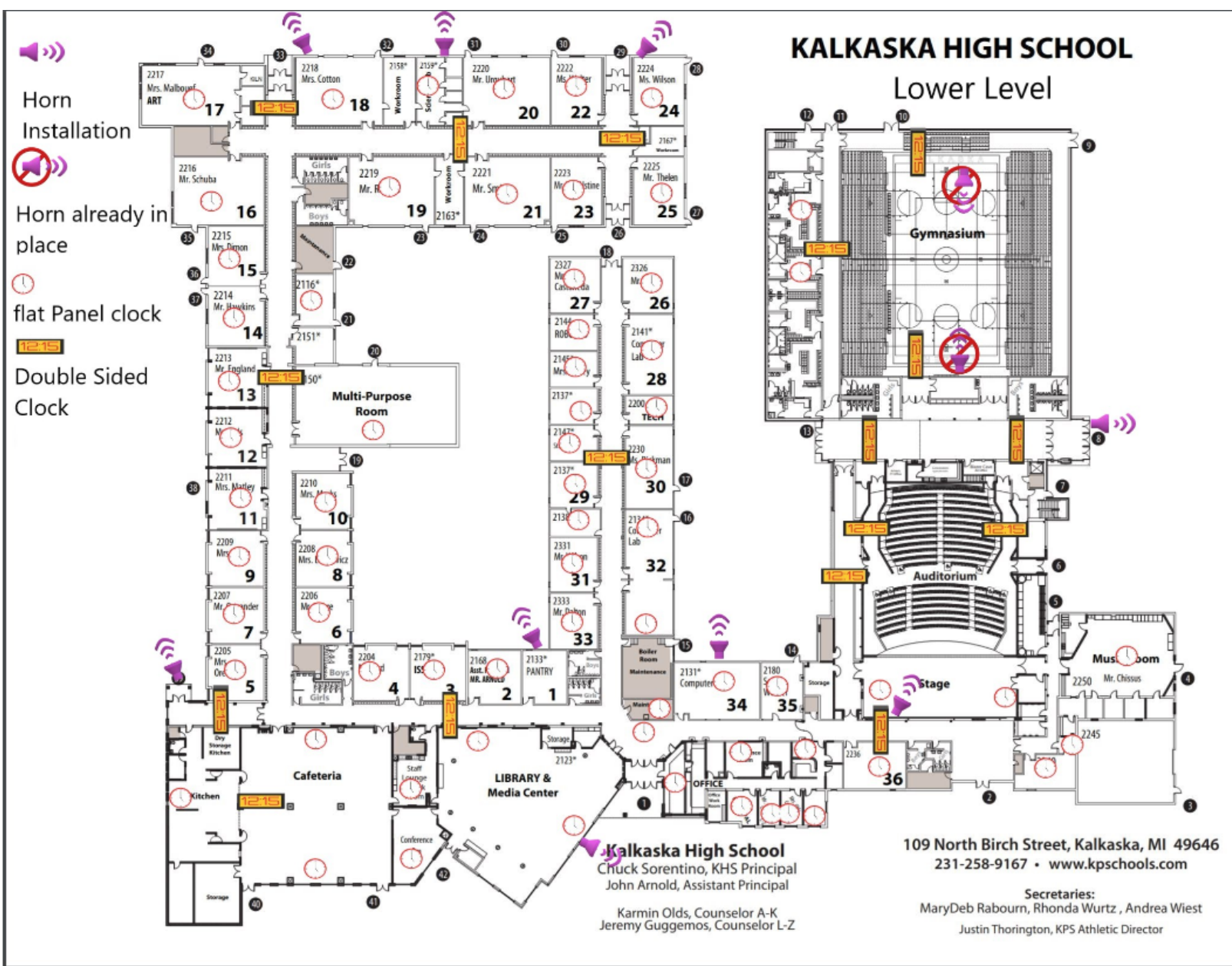
SEVERE WEATHER, FIRE & EVACUATION ROUTES

314 South Cherry St., Kalkaska, MI 49646
231-258-9146 • www.kpschools.com

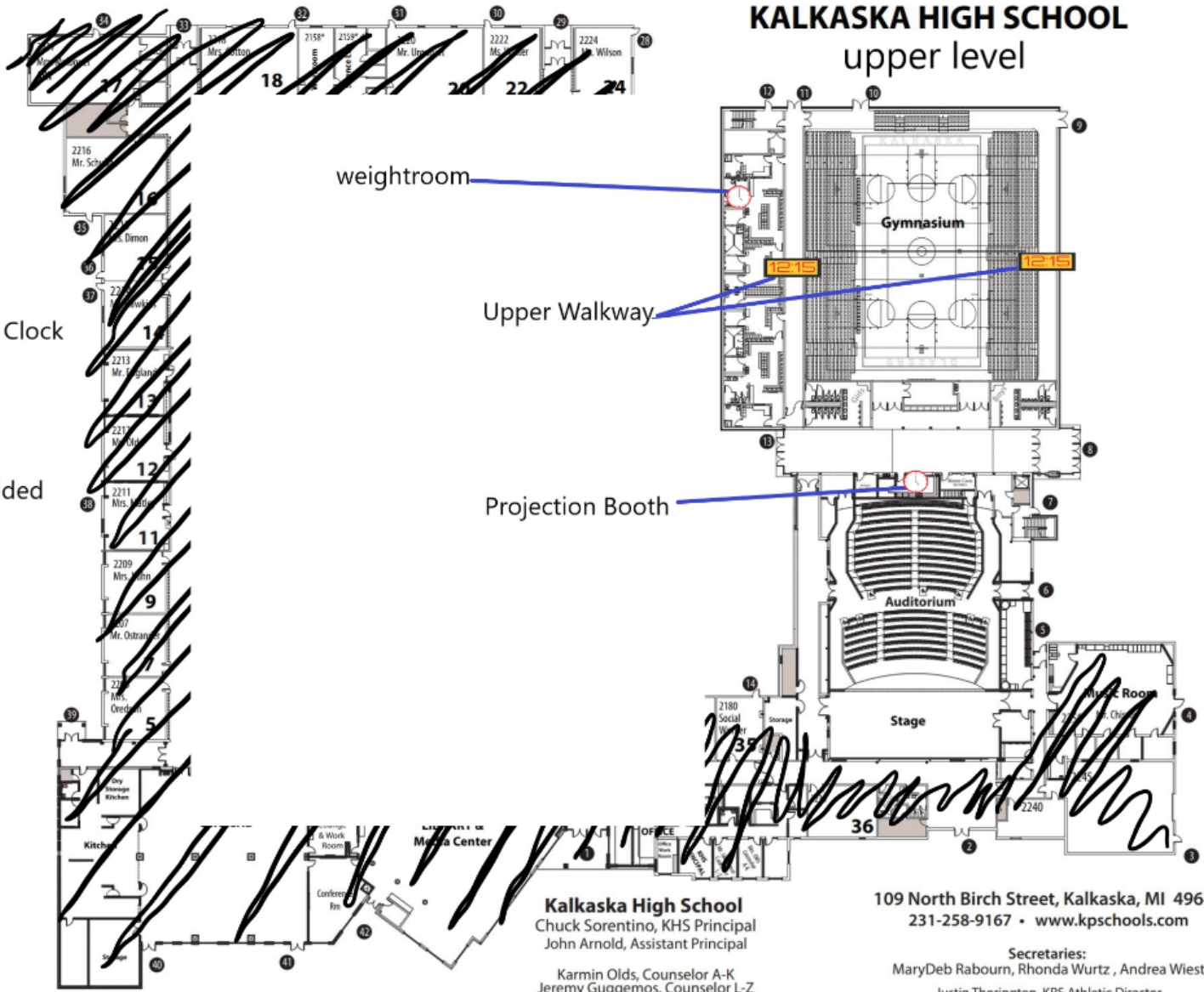
Ryan Moore, Principal
Woodruff

-  Flat Panel Clock
-  Double sided clock
-  Horn Installation
-  Horn already in place





KALKASKA HIGH SCHOOL upper level



Kalkaska High School
 Chuck Sorentino, KHS Principal
 John Arnold, Assistant Principal
 Karmin Olds, Counselor A-K
 Jeremy Guggemos, Counselor L-Z

109 North Birch Street, Kalkaska, MI 49646
 231-258-9167 • www.kpschools.com

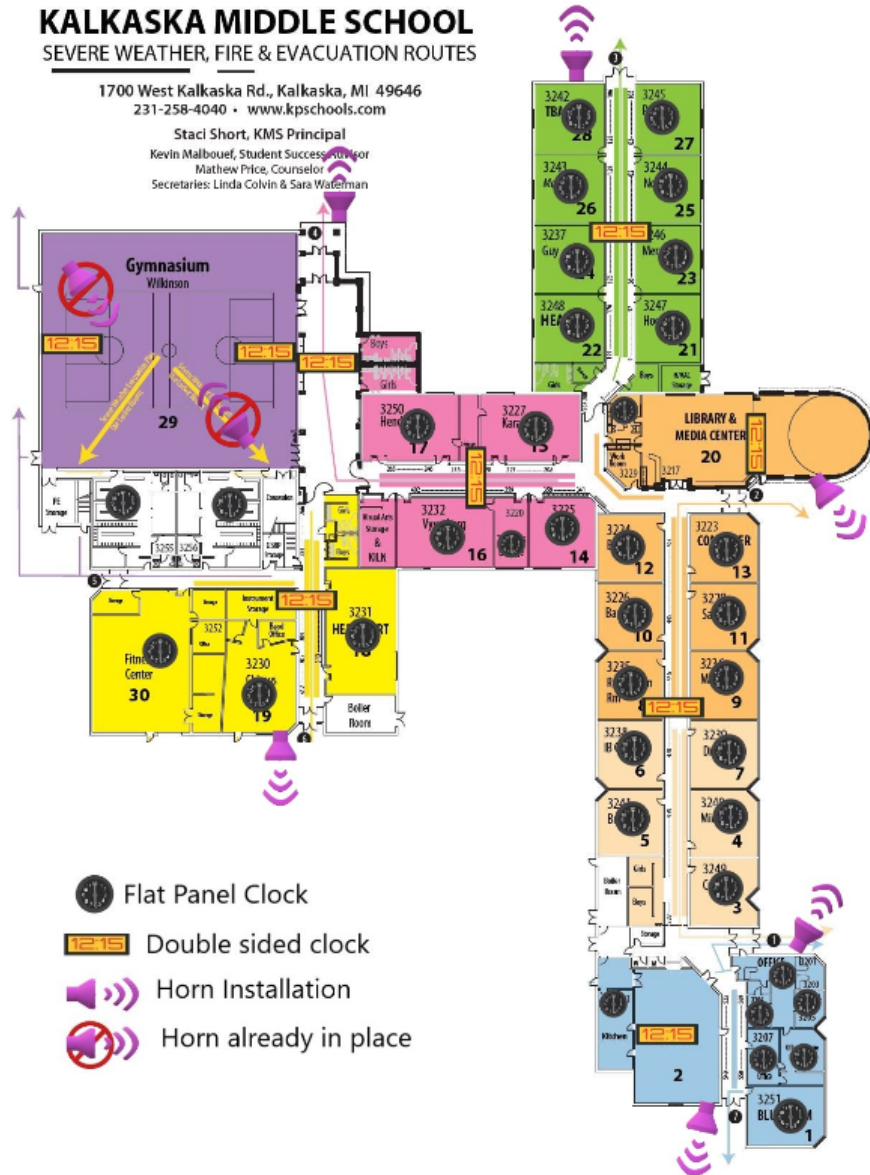
Secretaries:
 MaryDeb Rabourn, Rhonda Wurtz, Andrea Wiest
 Justin Thorington, KPS Athletic Director

KALKASKA MIDDLE SCHOOL

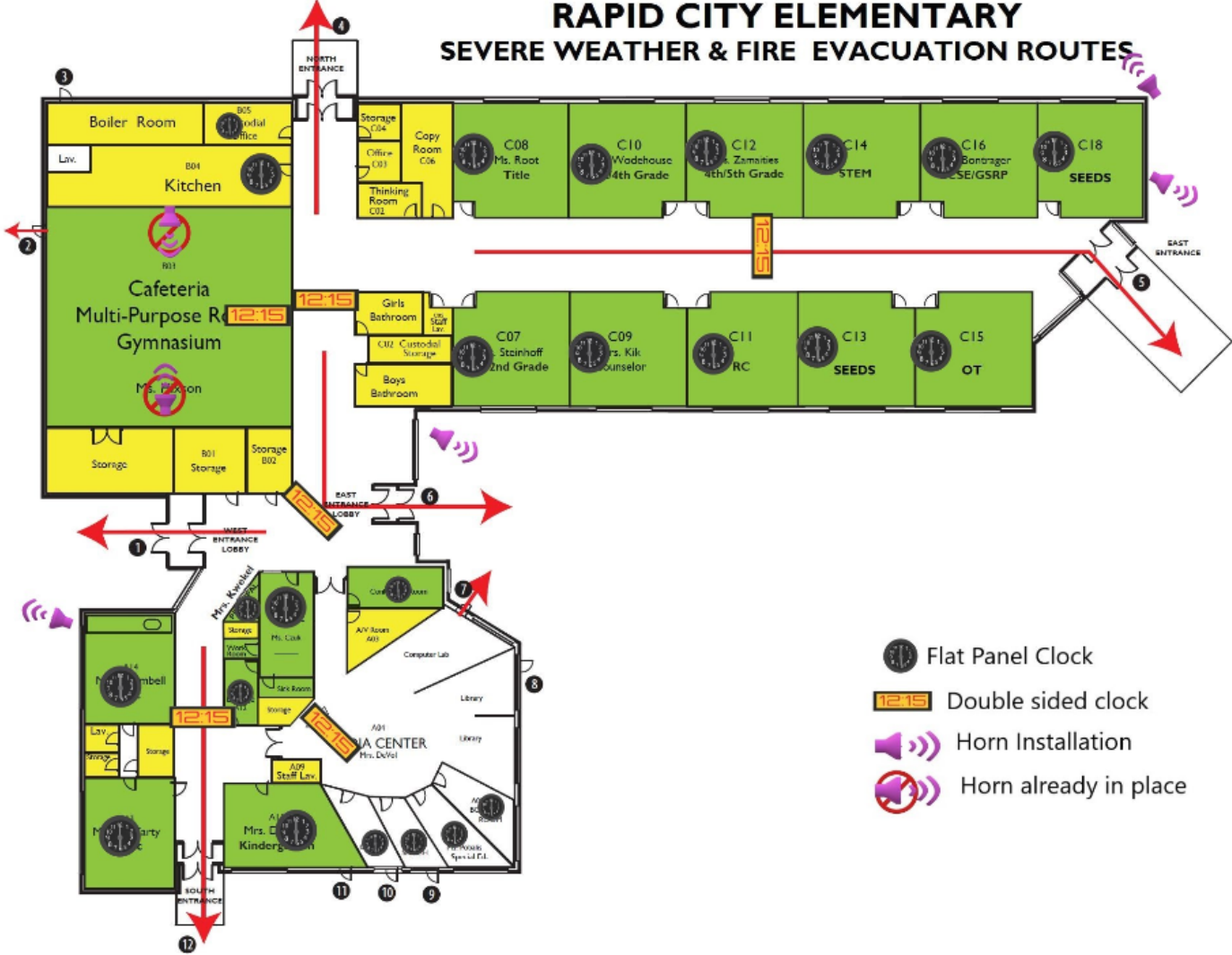
SEVERE WEATHER, FIRE & EVACUATION ROUTES

1700 West Kalkaska Rd., Kalkaska, MI 49646
 231-258-4040 • www.kpschools.com

Staci Short, KMS Principal
 Kevin Malbouef, Student Success Director
 Mathew Price, Counselor
 Secretaries: Linda Colvin & Sara Waterman



RAPID CITY ELEMENTARY SEVERE WEATHER & FIRE EVACUATION ROUTES



RAPID CITY ELEMENTARY

5258 River Street, Rapid City, MI 49476
231-331-6121 • www.kpschools.com